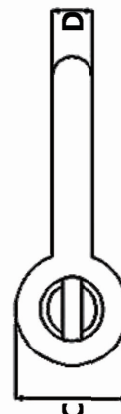
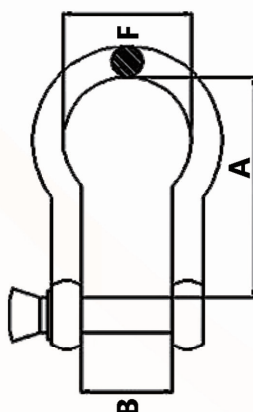


## Bow Shackle



Size	A (mm)	B (mm)	C (mm)	D (mm)	kg/1000pcs
M4	16.0	9.0	8.5	3.9	8.0
M5	17.5	11.2	9.8	4.9	14.5
M6	23.0	12.8	11.5	5.6	25.6
M8	27.0	16.0	16.3	7.6	57.5
M10	35.4	22.5	18.8	9.6	111.0
M12	45.0	25.0	23.6	11.6	198.0
M14	56.2	27.9	27.6	13.6	323.6
M16	61.5	34.0	31.6	15.5	482.2
M18	71.2	39.5	35.1	17.5	696.5
M20	80.0	40.0	39.1	19.6	939.5
M22	86.5	45.5	43.5	21.9	1277.5
M25	92.4	50.1	48.4	24.5	1772.5
M28	118.5	59.4	54.0	27.2	2595.6
M32	154.3	68.2	5 62.7	31.4	4081.7
M38	173.6	81.3	75.9	37.5	7129.5



• Note: We reserve the right to change parameters without prior notification.